

**Everything on display**  
Overview of our products



Productoverview • 2008

# display

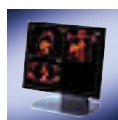
## SOLUTIONS



# Flat Panel Displays



Grayscale Displays	SMD 18101 1 MPixel, digital + analog	SMD 19102 1 MPixel, digital + analog + video input	SMD 21510 5 MPixel, digital
Screen diagonal	18.1"	19.0"	21.3"
Mounting options	Ceiling susp. or Desktop	Ceiling susp. or Desktop	Desktop
Mechanical adaption	VESA	VESA	VESA
Orientation	Landscape	Landscape or Portrait	Landscape or Portrait
Viewing angle	170° H and V	170° H and V	170° H and V
Resolution	1280 x 1024	1280 x 1024	2048 x 2560
Backlight technology	CCFL	CCFL	CCFL
Backlight color	Blue tinted	Blue tinted	Blue tinted
Luminance stability solution	ISS	ISS	ISS, ICS
Luminance	700 cd/m <sup>2</sup> (117 fL)	1.000 cd/m <sup>2</sup> (292 fL)	750 cd/m <sup>2</sup> (220 fL)
Connectivity	DVI-I, 5x BNC, 15pin-SubD, 1x BNC, 4pin-MiniDIN, RJ11, DVI	DVI-I, 15pin-SubD, 4pin-MiniDIN (Y/C signal), 1 x BNC (FBAS signal), 6pin-MiniDin, RJ11	DVI-I, 6pin-MiniDin, DVI, USB (B)
Data interface	RS 232-Bus, DDC	RS 232-Bus, DDC	RS 232-Bus (Photometer), DDC, USB
Setting via	OSD, SMfit Total Care	OSD, SMfit Total Care	SMfit Total Care
Protective Glass Version	Optional	Optional	-
Order No. - Display without stand with protective glass - Display with stand with protective glass	6GF6221-2CD13 6GF6221-2CD15 6GF6221-2CD14 -	6GF6211-2EA50 6GF6211-2EA60 6GF6211-2CA51 -	- - 6GF6201-5CA23 -



Color Displays	SCD 19100 1 MPixel, digital + analog	SCD 19102 1 MPixel, digital + analog + video input	SHD 21205 2 MPixel, digital + analog	SCD 21310 3 MPixel, digital
Screen diagonal	19.0"	19.0"	21.3"	20.8"
Mounting options	Ceiling susp.	Ceiling susp. or Desktop	Ceiling susp. or Desktop	Desktop
Mechanical adaption	VESA	VESA	VESA	VESA
Orientation	Landscape or Portrait	Landscape or Portrait	Landscape or Portrait	Landscape or Portrait
Viewing angle	170° H and V	170° H and V	170° H and V	170° H and V
Resolution	1280 x 1024	1280 x 1024	1600 x 1200	1536 x 2048
Backlight technology	CCFL	CCFL	CCFL	CCFL
Luminance stability solution	ISS	ISS	ISS	ISS
Luminance	280 cd/m <sup>2</sup> (82 fL)	280 cd/m <sup>2</sup> (82 fL)	450 cd/m <sup>2</sup> (132 fL)	400 cd/m <sup>2</sup> (117 fL)
Connectivity	DVI-I, 15pin-SubD, 6pin-MiniDin, RJ11	DVI-I, 15pin-SubD, 4pin-MiniDIN (Y/C signal), 1 x BNC (FBAS signal), 6pin-MiniDin, RJ11	DVI-I, 15pin-SubD, 6pin-MiniDin, RJ11	DVI-I, 6pin-MiniDin, DVI, USB (B)
Data interface	RS 232-Bus, DDC	RS 232-Bus, DDC	RS 232-Bus, DDC	RS 232-Bus (Photometer), DDC
Setting via	OSD, SMfit Total Care	OSD, SMfit Total Care	OSD, SMfit Total Care	SMfit Total Care
Protective Glass Version	Optional	Optional	Optional	Optional
Order No. - Display without stand with protective glass - Display with multifunctional stand with protective glass	6GF6210-2CA10 6GF6210-2CA20 - -	6GF6210-2EA10 6GF6210-2EA20 6GF6210-2EA01 -	6GF6200-2HA10 6GF6200-2HA20 6GF6200-2HA01 6GF6200-2HA02	- - 6GF6200-4CA23 6GF6200-4CA25

## 3D-Flat Panel Displays



3D Color Display	<b>SXD<sup>3</sup> 1899</b> 1 MPixel 3D, analog
Screen diagonal	18.1"
Mounting options	Desktop
Orientation	Landscape
Viewing angle	170° H and V
Resolution	1280 x 1024
Backlight technology	CCFL
Luminance stability solution	ISS
Connectivity	RGB
Data interface	RS 232-Bus
Setting via	OSD
Order No. - Display with fixed stand	<b>6FD6220-1CD</b>

## DVI-Transmission Links



DVI-Transmission Links	<b>SDL 3501</b>	<b>SDL 2501</b>
Input	DVI-D	DVI-D
Output	DVI-D	DVI-D
Transition	Transmitter module at DVI Port of PC, CAT cable, receiver module at DVI input of display	Transmitter module at DVI Port of PC, CAT cable, receiver module at DVI input of display
Cable Type	High quality CAT cable, 36 m	High quality CAT cable, 23 m
Datapath	Recognition of display via EDID DDC data communication to display	Recognition of display via EDID DDC data communication to display
Order No. - including power supply for receiver module	<b>6GF6010-ODA36</b> <b>6GF6010-1DA36</b>	- <b>6GF6010-1DA23</b>

## Stands



Stands	<b>SAB 2110 RC</b> Multifunctional	<b>SAB 2107 RC</b> Multifunctional	<b>Standfuß für 17" - 19" Displays</b> Fix	<b>Standfuß für 17" - 21" Displays</b> Fix
Display weight class	7 ... 10 kg	6 ... 9 kg	all	all
Display size class	≤ 21"	≤ 21"	17 ... 19"	17 ... 21"
Mounting plate	VESA	VESA	VESA	VESA
Height adjustment	100 mm	100 mm	No	No
Portrait / Landscape rotation	Yes	Yes	No	No
Swivel	± 30	± 30	-	-
Tilt (display inclination)	Yes	Yes	Yes	Yes
Cable cover	Yes	Yes	Yes	Yes
Compatible displays	all displays with protection glass, SMD 21510, SHD 21205, SCD 21310	SMD 18101, SMD 19102, SCD 19102, SCD 19100	SMD 18101, SMD 19102, SCD 19102, SCD 19100	SMD 21510, SHD 21205, SCD 21310
Order No.	<b>6GF6988-8AA02</b>	<b>6GF6988-8AA01</b>	<b>6GF6280-1DG</b>	<b>6GF6280-1DF</b>

## Display Controllers



Display Controllers	<b>SDG 1612 D</b> 5 MPixel	<b>SDG 3212 D</b> 5 MPixel
Max. resolution per output	2048 x 2560	2048 x 2560
Format	Landscape or Portrait	Landscape or Portrait
Display outputs	2	2
Grayscales	256 of 1024	1024
Memory	32 MByte SDRAM	256 MByte DDRAM
Supported operating systems	Windows 2000, XP	Windows XP
Order No.	<b>6GF6632-2TP02</b>	<b>6GF6635-2TM10</b>

# Software



Software	SMfit Total Care with Serial Spot Meter	SMfit Total Care with Advanced Serial Luminance Meter
<b>Supported Displays</b>	Current grayscale and color LCDs, high-precision luminance calibration of all displays	Current grayscale and color LCDs, luminance calibration and color temperature calibration (for LCDs, color displays)
<b>Supported display controllers</b>	SDG / other	
<b>Supported operating systems</b>	Windows XP, upon request: Linux and Windows Vista	
<b>Supported units of measurement</b>	cd/m <sup>2</sup> and fL	cd/m <sup>2</sup> and fL, color coordinates (x, y)
<b>Supported gamma models</b>	Linear; DICOM-Part 14, CIE; Gamma function (1.0-5.0); Logarithmic Luminance Linear Model; User defined model	
<b>LUT adaption</b>	Remote and local LUT adaption (up to 5 Look Up Tables) without luminance meter	
<b>Measurement options</b>	Serial Spot Meter and internal sensors	Advanced Serial Luminance Meter and internal sensors
<b>Integrated conformance tests</b>	DIN 6868-57: customizable acceptance test and consistency check in accordance with QS-RL standard	
<b>Remote access</b>	Point to point access via IP network	
<b>Device status and history</b>	Graphic representation of display status Reports automatically generated and archived for all calibration, measurement and test activities	
<b>Monitoring</b>	All relevant device settings are logged and verified at the time of calibration	
<b>Test images</b>	Wide range of integrated test images, including SMPTE, AAPM, Verilum, etc. Supports advanced preview and image management functions	
<b>Order No. - including USB adapter</b>	<b>6GF6980-7DA31</b> -	<b>6GF6980-7DA32</b> <b>6GF6980-7DA33</b>

Note: A software license is included with all SMfit Total Care photometer packages. The SMfit Total Care QA software may also be downloaded from [www.eizo.eu](http://www.eizo.eu) for testing and display set-up purposes.

## EIZO GmbH

Display Technologies  
Siemensallee 84  
76187 KARLSRUHE  
DEUTSCHLAND

[www.eizo.eu](http://www.eizo.eu)

*The information provided in this brochure contains merely general descriptions or characteristics of performance which in actual case of use do not always apply as described or which may change as a result of further development of the products. An obligation to provide the respective characteristics shall only exist if expressly agreed in the terms of contract.*

*All product designations may be trademarks or product names of EIZO GmbH or supplier companies whose use by third parties for their own purposes could violate the rights of the owners.*