



[→ Product Website](#)

## Chart Table Monitor

With 4K UHD resolution (3840 x 2160) and a large diagonal of 138.8 cm / 54.6 inches, the DuraVision MDU5501WT offers the space and detail required for electronic charts. Brightness, luminance characteristics and colour reproduction are factory calibrated for colour-correct display in ECDIS systems. A responsive capacitive multi-touch surface allows operation with a finger or stylus. The monitor handles up to ten simultaneous touches, so it can be operated by multiple people simultaneously. A palm recognition feature allows users to easily place their hands or arms on the screen without accidentally triggering an input. Even spills are ignored by the touch system before it shuts down until cleaned. The DuraVision MDU5501WT has sophisticated brightness control with a wide dimming range from less than 1 cd/sqm to 610 cd/sqm to ensure optimal visibility during the day or at night.

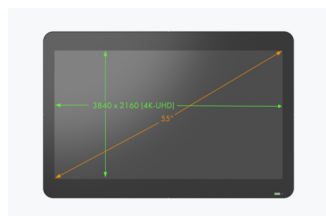
- ✓ 55-inch 4K UHD monitor with ample space for efficient chart display
- ✓ Durable and reliable projective capacitive multi-touch surface for intuitive operation
- ✓ Good visibility with adjustable brightness setting for day and night
- ✓ Approval by classification societies and suitability for ECDIS use according to IEC 61174
- ✓ Meets the temperature, humidity and vibration requirements specified in the international standard IEC 60945
- ✓ Designed for 24-hour use and equipped with a three-year warranty

## Image quality

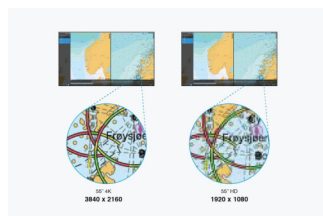
### Precise, high-contrast, bright and crisp screen

#### Ample space for efficient operation

A large 55-inch screen provides ample space for ship operators to view important nautical information from one or more applications in a single location. Images are displayed pixel by pixel in 4K UHD resolution (3840 × 2160) for precise observation.



Ample space



4K UHD resolution

#### Large dimming range for changing light conditions

Suitable for day and night operation: Thanks to the wide dimming range from less than 1 cd/m<sup>2</sup> to 610 cd/m<sup>2</sup>, the monitor is ideally suited to changing light conditions. This means that the brightness of the monitor can be optimally configured for all ambient lighting and can be used without problems even in dark rooms.



#### Calibrated for ECDIS

Backlight brightness, gamma, and RGB color settings are calibrated at the factory so the monitor achieves accurate color reproduction for meeting the highly specialized requirements of ECDIS systems. The monitor meets IEC 61174, IEC 62288, and IEC 62388 international standards for ECDIS systems and radar applications.



Formal approval dates for standards may vary. Contact EIZO for date of compliance for IEC 61174.

#### ECDIS indicator

The ECDIS indicator located on the front of the monitor is lit when the brightness and color settings correctly meet the requirements for ECDIS. In the event the monitor's settings are adjusted such that the brightness is no longer supporting ECDIS standards, the light will automatically turn off.



## Touch functionality

### Operation with finger or touch-pen

#### Projective capacitive multi-touch screen for route planning

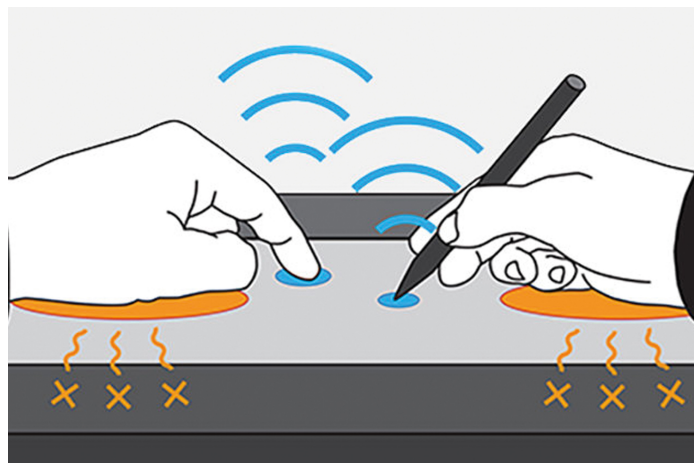
The DuraVision MDU5501WT is equipped with a particularly robust and reliable projective capacitive touch technology. The monitor allows operation with the finger or a special stylus.

The spacious 55-inch chart monitor is a practical alternative to paper charts. Thanks to the approval by the most important classification societies, it is optimally suited for ECDIS, radar systems, command bridges and other applications.



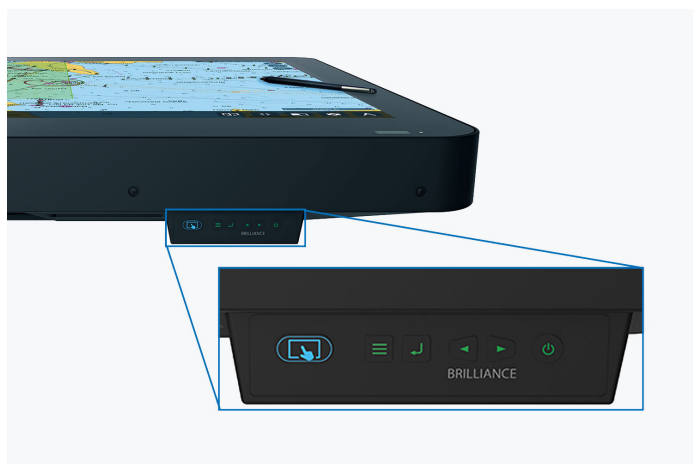
#### Multi-touch screen with robust surface

The screen can detect up to 10 simultaneous touches so multiple people can operate the monitor at the same time. The monitor is equipped with palm rejection which allows you to rest your hand or arm directly on the screen naturally without causing any unintended touch input.



#### Touch detection control

Users can easily turn touch detection on or off by pushing the button conveniently located on the monitor's outer rim. A button is located on two sides of the monitor for easy access.



#### Liquid detection

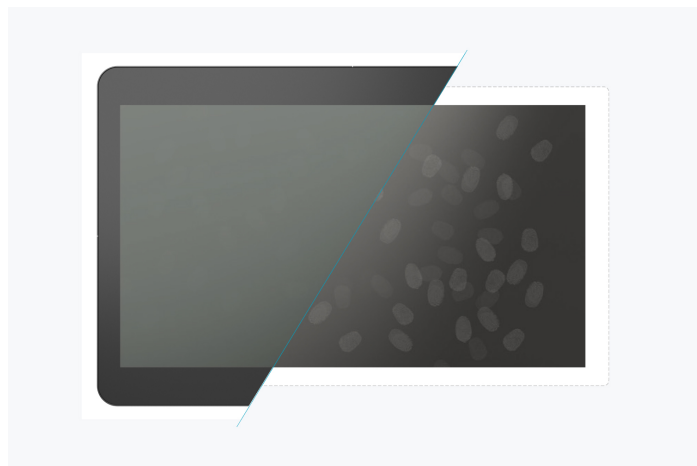
To prevent unintended touch input in the case of any liquid spillage on the screen, EIZO includes a function that detects spills. Once detected, the monitor will automatically disable touch functionality and re-enable it when the spill has been cleaned.



Liquid detection

## Fingerprint resistance

The DuraVision MDU5501WT's surface is coated with a fingerprint-resistant finish that minimizes the visibility of fingerprints left on the screen from touch interaction.



## Easy to use Features for greater comfort

### Fully flat table design

The monitor can be laid horizontally and has a fully flat surface, allowing it to double as a table for laying out traditional paper charts when they are occasionally called for. The wide outer edges of the monitor also provide a place for the crew to conveniently set items or rest their hands without obstructing the view of the screen.



### EVERYTHING AT A GLANCE

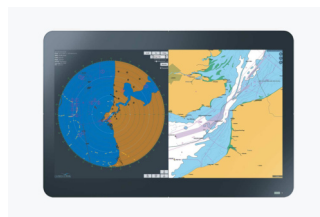
## Picture-in-Picture and Picture-by-Picture

With the Picture-in-Picture (PiP) function, a second signal source can be displayed in a separate small screen area on the monitor. This allows two applications with navigation data to be viewed simultaneously.

Picture-by-Picture (PbP) mode allows you to independently view up to two separate signal sources side by side, such as radar and navigation information.



Picture-in-Picture-modus

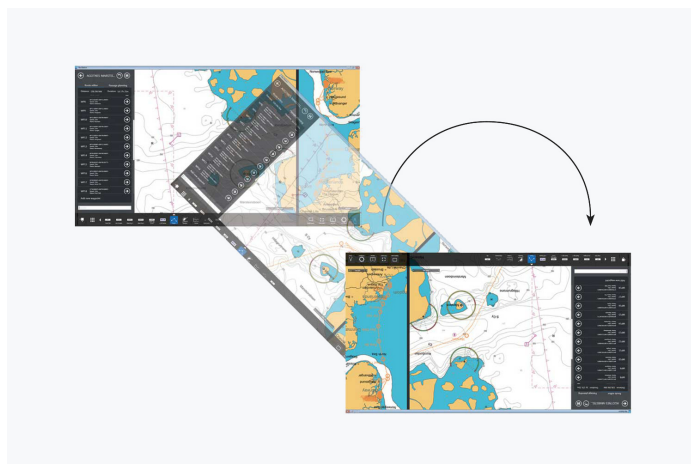


Picture-by-Picture-modus

## EIZO Screen Rotator

EIZO Screen Rotator is a free software application that allows you to quickly rotate the image on the monitor by 180° with a single touch. This is helpful when multiple members of the crew are viewing the screen from opposite sides of the chart table. (Supported by Windows OS only.)

[Download EIZO Screen Rotator](#)

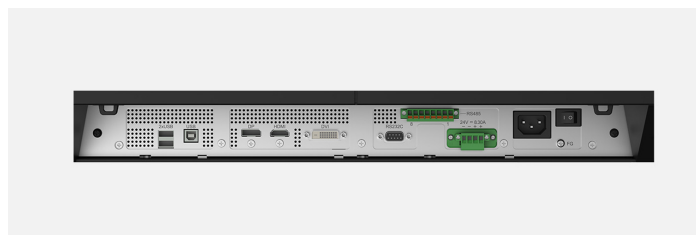




## Variety of ports Best connectivity

### Monitor control

The DuraVision MDU5501WT is equipped with a wide range of communication interfaces for remote monitor control such as brightness adjustment or powering the monitor on and off – RS232C, USB, RS485, RJ45 (Ethernet), and specialized port (Extended Keyboard).



### Multiple power inputs

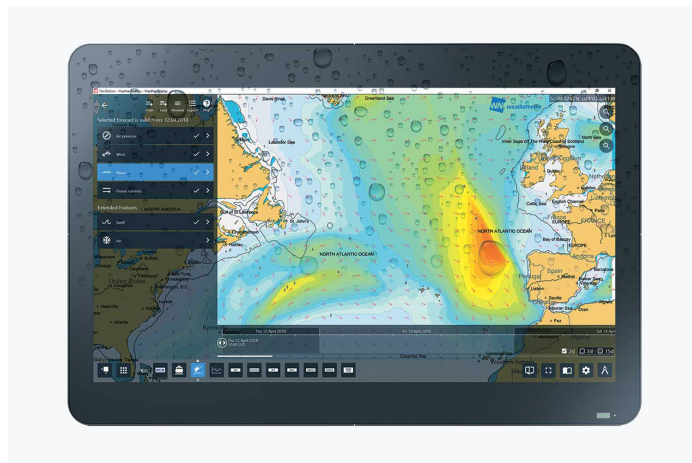
In order to meet the needs of different installation environments, multiple power inputs are equipped, allowing you to power the monitor using either DC or AC connectors.

## Durability And reliability

### Protection

The monitor offers durability for use in harsh maritime environments, complying with the conditions for temperature, humidity, and vibration as defined in the IEC 60945 international standard for maritime navigation and radio communication equipment and systems. An IP65

rating for the front of the monitor ensures it can withstand dust ingress and is protected against low-pressure water jets.



### Maritime Classifications

The monitor meets the requirements for major maritime classifications with approvals for LR (UK), DNV (Norway/Germany), ABS (USA) NK (Japan) and EU RO MR.



## Three-year warranty

EIZO grants a three-year warranty. This is possible thanks to the highly developed production process based on a simple principle of success: sophisticated and innovative technology, made from high-end materials.



## 24/7 use

The MDU5501WT is built for 24-hour use and is characterised by maximum reliability.



## Sustainability Environmentally and socially conscious production

### Sustainable and durable

The MDU5501WT is designed to have a long service life and normally outlasts the warranty period by some distance. Replacement parts are available many years af-

ter production has ceased. The entire lifecycle takes into account the impact on the environment as the longevity of the product and the fact it can be repaired saves resources and protects the environment. When designing the MDU5501WT, we took a minimalistic approach to our resources by using high-quality components and materials, as well as a careful production process.

### Socially responsible production

The MDU5501WT is produced in a socially responsible way. It is free of child labour and forced labour. Suppliers along the supply chain have been carefully selected and they have also committed themselves to produce in a socially responsible way. This applies in particular to conflict minerals. We present a detailed report about our social responsibility annually and voluntarily.

### Environmentally and climate friendly

Each MDU5501WT is manufactured in our own factory, which implements an environmental and energy management system in accordance with ISO 14001 und ISO 50001. This includes measures to reduce waste, wastewater and emissions, resource and energy consumption, as well as to encourage environmentally conscious behavior among employees. We publicly report on these measures on an annual basis.



### Note

Chart table stand is not included with the monitor.

## Technical Data

GENERAL	
Item no.	MDU5501WT
Case color	Black
Areas of application	Industry
Product line	DuraVision
Areas of application	Maritime
SCREEN	
Screen size [in inches]	54,6
Screen size [in cm]	139
Format	16:9
Viewable image size (width x height) [in mm]	1209,6 x 680,4
Ideal and recommended resolution	3840 x 2160 (4K UHD)
Pixel pitch [in mm]	0,315 x 0,315
Panel technology	VA
Max. viewing angle horizontal [in °]	178
Max. viewing angle vertical [in °]	178
Number of colors or greyscale	16.7 million colors (DVI, 8 Bit), 16.7 million colors (DisplayPort, 8 Bit), 16.7 million colors (HDMI, 8 Bit)
Max. brightness (typical) [in cd/m <sup>2</sup> ]	610
Max. dark room contrast (typical)	4000:1
Response time grey-grey alternation (typical) [in ms]	8
Backlight	LED
FEATURES & OPERATION	
24/7 operation	✓
Integrated power unit	✓
Touchscreen	✓
Touch panel type	Projected capacitive (PCAP)
Touch compatible OS	Windows 8.1 (64-bit/32-bit), Windows 11, Windows 10
Touch points	10
CONNECTIONS	
Touch port	USB
Signal inputs	DisplayPort (HDCP 1.3), HDMI (HDCP 1.4/2.2), DVI-D (HDCP 1.4)
USB specification	USB 2
USB upstream ports	1 x type B
USB downstream ports	2x type A
Graphic signal	DVI Single Link (TMDS), DisplayPort, HDMI (RGB, YUV)
Control port	RS-485, ECOM, Modbus, RS-232C, USB-Protocol
ELECTRICAL DATA	
Frequency	DisplayPort: 31 - 135 kHz / 29 - 61 Hz HDMI: 31 - 135 kHz / 29 - 61 Hz DVI-D: 31 - 75 kHz / 59 - 61 Hz
Maximum Power Consumption [in watts]	199 (DC) / 195 (AC)
Power consumption with power switch off [in watts]	0
Power supply	AC 100-240 V, 50/60 Hz; DC 24 V
DIMENSIONS & WEIGHT	
Dimensions (without stand) (width x height x depth) [in mm]	1334 x 888 x 120,6
Weight (without stand) [in kg]	71,7
Dimension drawing (PDF)	<a href="#">Dimension drawing (PDF)</a>
CERTIFICATION & STANDARDS	
IP rating/protection class	IP65 (rear IP22)
Operating temperature	-15 - 55 °C / 10 - 90 % (R.H., non condensing)
Compass Safe Distance	Standard compass: 2,65 m, Steering compass: 1,70 m
Certification	Ship Classification: DNV (Norway / Germany), NK (Japan), LR (UK), ABS (USA), CE, UKCA, CB, RoHS, WEEE, EU RO MR, IEC60945, IEC61174, IEC62288, IEC62388
SOFTWARE & ACCESSORIES	
Other box contents	Touch pen incl. mount, Quick guide
WARRANTY	
Warranty periode	3 years

Find your EIZO contact:  
EIZO Europe GmbH  
Belgrader Straße 2  
41069 Mönchengladbach  
Phone: +49 2161 8210-0  
[www.eizo.eu](http://www.eizo.eu)