

[→ Product Website](#)

Software for the office

System administrators can use the Screen InStyle Server server application to centrally manage and control monitors connected to the network. Screen InStyle Server can be used to centrally set up display or energy-saving settings for defined target monitors. The browser-based software is also useful for efficient asset management, as inventory information about connected monitors and PCs can be viewed.

- ✓ Software for EIZO FlexScan Office Monitors
- ✓ Server application for managing connected monitors and PCs in the network
- ✓ Efficient asset management and comprehensive monitor control
- ✓ Automatic collection of monitor and PC device information
- ✓ Reduced power consumption thanks to centralized power settings
- ✓ More security thanks to lock function

Managing monitors and PCs in the network

Screen InStyle Server is a browser-based management tool that allows monitors connected to the network to be managed centrally.

Screen InStyle Server supports the management of PCs running a Windows version - but not a macOS version - of Screen InStyle.

Managing monitors and PCs in the network

Screen InStyle Server supports efficient inventory management. Administrators can view information such as the number, model or serial number and operating status of all monitors connected to the network. This allows them to plan when monitors need to be replaced based on their total hours of use, for example.

Data from PCs such as the operating system, user name or IP address can also be accessed. Monitor and PC information can be exported to Excel and transferred to another management software.

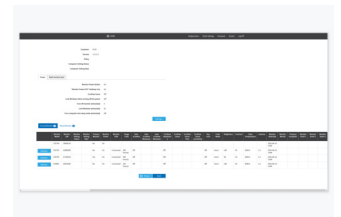
Control display settings

Monitor settings such as colour mode or brightness can be set for individual monitors or entire departments. This is useful for setting up the ergonomic conditions for each workstation.

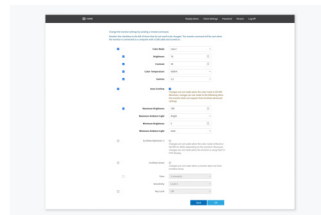
Screen InStyle Server is also advantageous for larger rollouts because it allows basic settings to be set up centrally all at once for individual users or user groups. It can prevent unintentional changes to the settings made by the user.



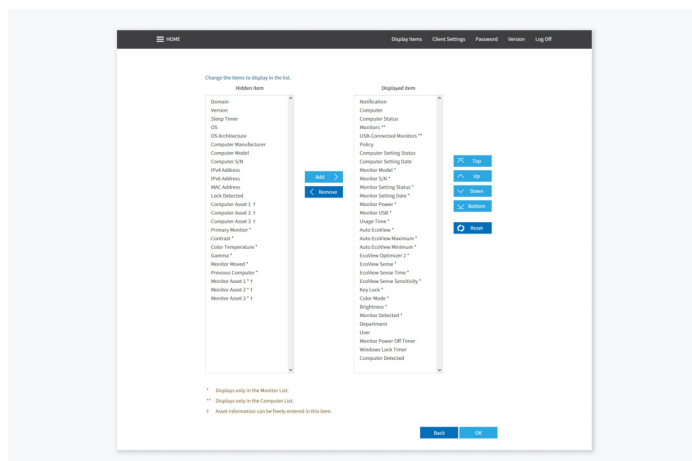
System administrators can set up optimal display modes for individual user groups.



The settings menu of each connected monitor can be accessed via a pull-down menu.



Commands to the selected target monitors are sent via the monitor settings.

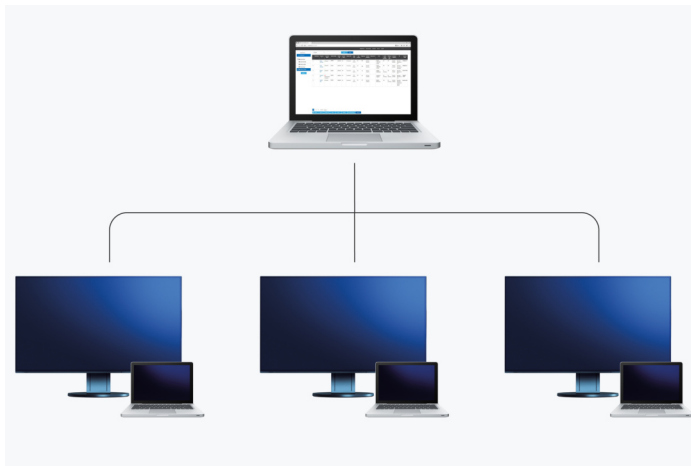


Information about monitors (e.g., model, serial number, colour mode) and PC data (e.g., operating system, user name, IP address) can be selected and displayed when needed.

Optimise power consumption

Screen InStyle Server gives device administrators the option of reducing the total power consumption of connected PCs and monitors.

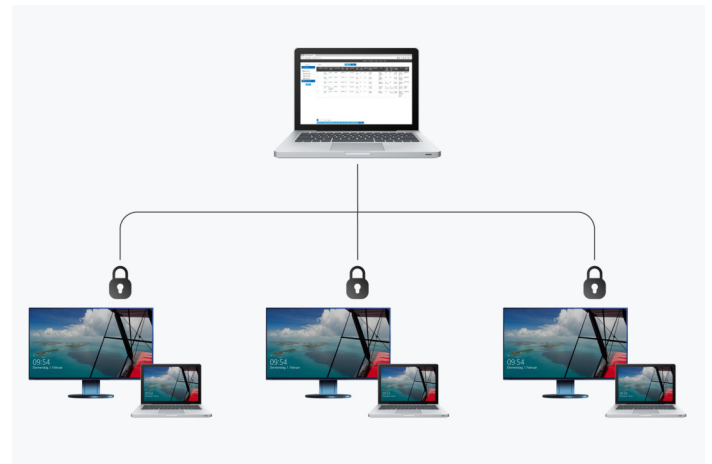
The devices can be set up to go automatically into sleep mode after a certain period of time without user interaction, which saves power.



Monitors and PC go into sleep mode after a certain period of time.

Automatic lock for greater security

Users often forget to lock their PC when they leave their workstation. Screen InStyle Server enables network PCs to send an automatic lock command after a predefined period of time without interaction. This increases the security in office environments.



The lock functionality for PCs can be controlled centrally with Screen InStyle Server.

Technical Data

SERVER PC

Resolution	1280 x 1024 or higher
Supported operating systems	Windows Server 2022, Windows Server 2019, Windows Server 2016, Windows 11, Windows 10 (64-bit)
Supported browsers	Google Chrome, Microsoft Edge, Internet Explorer

CLIENT

Supported client monitors	EV4340X, EV3895, EV3450XC, EV3240X, EV3285, EV3237, EV2795, EV2740X, EV2785, EV2781, EV2780, EV2760, EV2750, EV2720S, EV2495, EV2490, EV2485, EV2480, EV2457, EV2456, EV2455, EV2460, EV2451, EV2450, EV2410R, EV2360
Client PC	PC with USB port (To use Screen InStyle Server, the monitor must be connected to the PC via USB), Screen InStyle must be installed and the server configured
Supported operating systems	Windows 11, Windows 10 (32-bit, 64-bit)

Find your EIZO contact:
EIZO Europe GmbH
Belgrader Straße 2
41069 Mönchengladbach
Phone: +49 2161 8210-0
www.eizo.eu

All product names are trademarks or registered trademarks of EIZO Corporation in Japan and other countries or their respective companies. Copyright © 2025 EIZO Europe GmbH, Belgrader Str. 2, 41069 Mönchengladbach, Germany. All rights, errors and modifications reserved. Latest update: 08.06.2025